

***WEST LEICESTERSHIRE CLINICAL  
COMMISSIONING GROUP  
ANNUAL GENERAL MEETING 2017***



# ***INTRODUCTION AND WELCOME***

*By Professor Mayur Lakhani, Chair  
West Leicestershire Clinical  
Commissioning Group*



# The health system we operate in



## Better care together

Leicester, Leicestershire & Rutland health and social care



# Challenges for health and care

**Greater demand for health and care services**

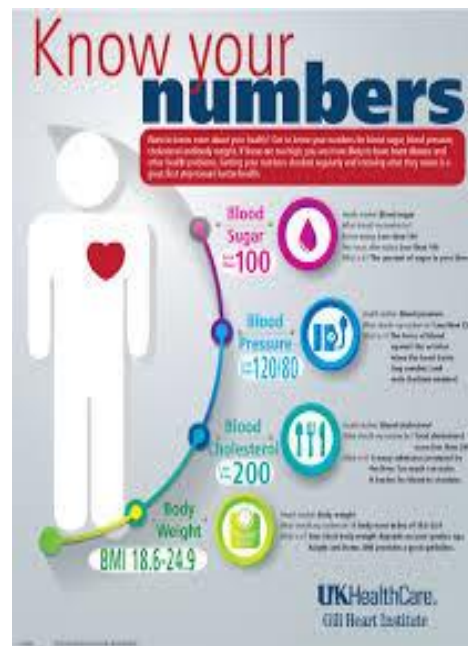
**Service are fragmented and can be inefficient**

**Use our resources for maximum effect**

**Take collective responsibility**



# Patients knowing their own conditions



# Improvements to support patients

**Federations: collaborating to improve patient care**

**Better, more responsive and integrated care wrapped around patients**

**Enhanced Summary Care Record**

**Transforming Estates and technology**



# ***FINANCIAL REVIEW***

***By Spencer Gay, Chief Finance Officer  
West Leicestershire Clinical  
Commissioning Group***

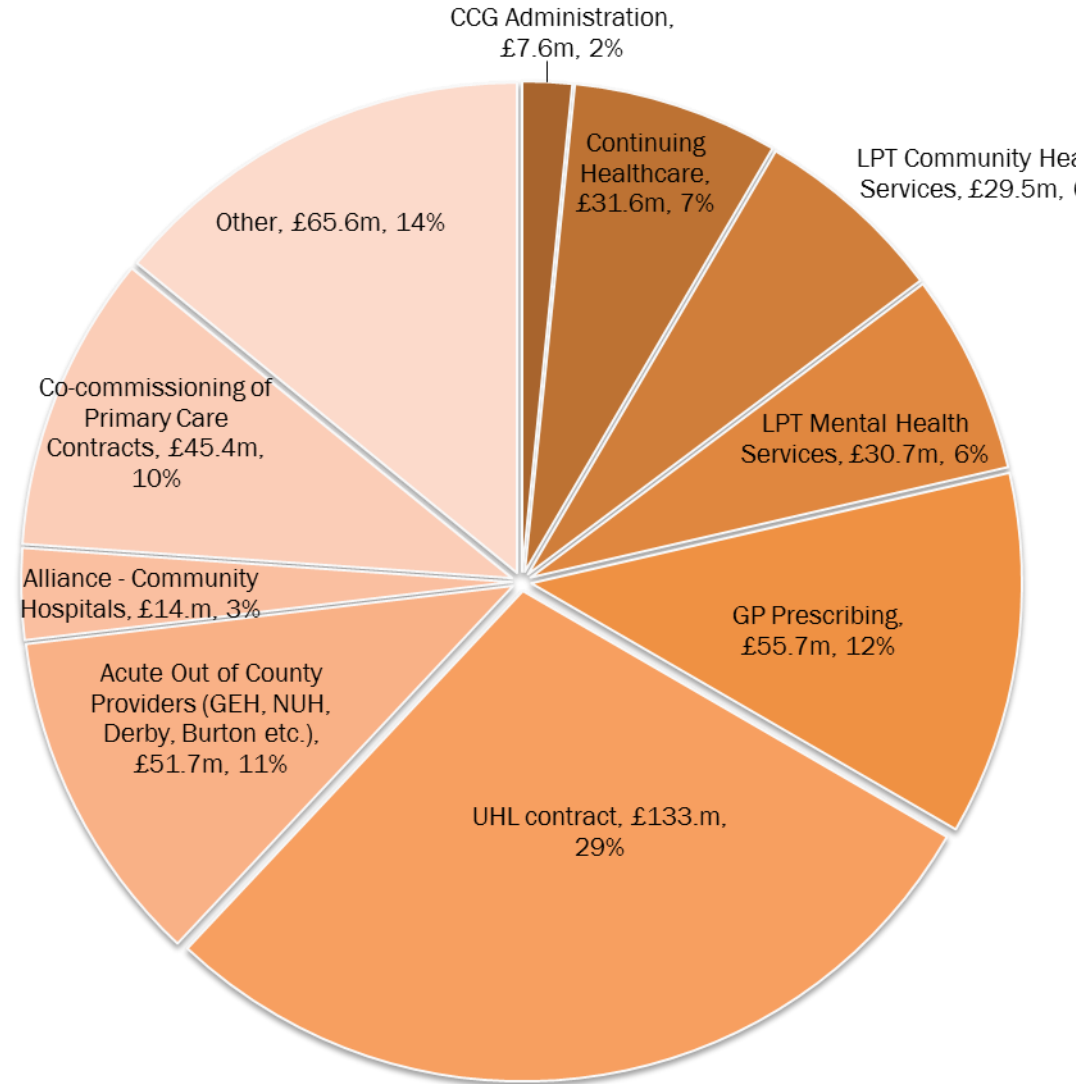


# Where we spend our money

**Managed our  
money well**

**Managed all our  
budgets effectively**

**Prompt payments  
to health care  
providers**





# The road ahead for 17/18

## Starting in a strong financial position

1% surplus carried over  
(£4.4m in 16/17)

Set aside an additional  
1% fund in 16/17

## Financial challenge is significant

Need to make £18.1m  
(3.8%) savings to  
balance budget in 17/18

Need to make an additional  
£15.5m savings in 18/19  
(assuming full delivery of  
17/18)

# Making all decisions together

Informed by patient experiences and insights



Clinically Led Decision making



Approval by Board or Finance and Planning  
Sub Group



Safeguards in place to monitor



# *OUR 2016/17*

*Toby Sanders  
Managing Director, West  
Leicestershire CCG*



# Assurance from NHS England



West Leicestershire  
Clinical Commissioning Group

*"...further development of your federations of practices"*

*"...robust mechanisms to review, report and assure quality..."*

**Better Health**

**Better Care**

**Sustainability**

**Leadership**

*"...strong performance in relation to dementia diagnosis rates."*

*"...positive engagement across all health and social care partners within the system."*

## Overall CCG Rating - Outstanding

**Only Outstanding rated CCG in the East Midlands**



# Addressing our performance

**“There are, however, significant challenges facing the system in order to deliver and sustain performance during 2017/18”**

	National Standards	West Leicestershire
Patients should be admitted, transferred or discharged within 4 hours of their arrival at an A&E department	95%	80%
Category A Red 2 incidents, response within 8 minutes	75%	57%
Cancer waits - 62 days wait from urgent GP referral to treatment	85%	76%
IAPT – appointment within 6 weeks of referral	75%	69% (Jan 17)
Number of patients waiting more than 52 weeks on incomplete pathways	0	24 (UHL all CCGs)

# Some things we are proud of

**Neuro and stroke  
rehabilitation service**

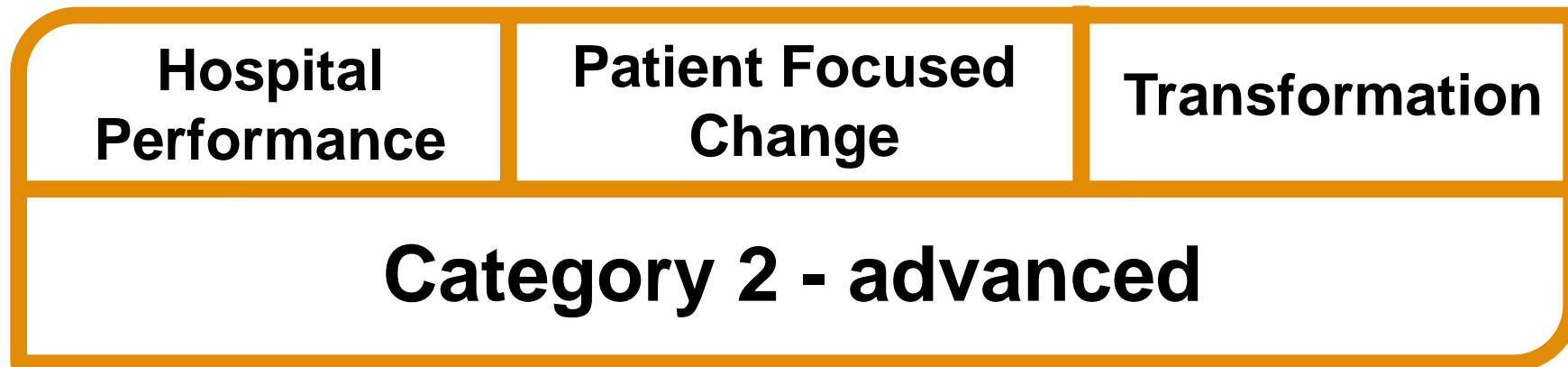
**Integrated  
cardio-respiratory  
project**

**New approach to  
urgent and emergency  
care**

**New mental health recovery  
network, commissioned with  
the third sector**

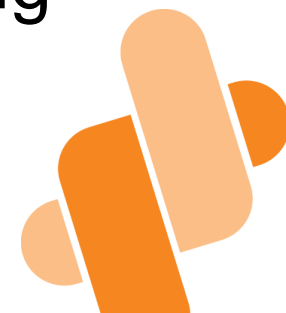
**Excellent progress on shared  
Summary Care Records**

# Current STP position



- Clear plan, backed with capital funding
- Final revisions in light of patient feedback
- Moving towards formal consultation in spring

2018



# Already investing in the system

**£30.8m** secured to expand level 3 intensive care unit beds on two sites including a new ward at the Glenfield Hospital

**£8m** secured to relocate and expand the CAMHS inpatient facilities at Glenfield including a specialist eating disorder services

**Submitted further capital bids to support our plans for acute and community hospital reconfiguration**





# Our agenda for the next year

- Ensuring safety and quality of care
- Consistent care across LLR for urgent care, general practice, mental health and cancer
- Working in integrated locality teams
- Breaking down organisational barriers between different parts of the NHS
- Managing the money well



# ***QUESTIONS AND ANSWERS***



***THANK YOU***

